

RICHARD A. BRUSCHI

richard.a.bruschi@gmail.com

richardbruschi.com

PORTFOLIO

UK COMMERCIAL PROJECTS

PROJECT TYPES	Hospitality. Care homes. New construction, refurbishment, extension.
PROJECTS	<p>I worked on various commercial projects of different types, such as a hotel and a care home. These two specifically were new-build extensions which significantly increased the footprint and the overall internal area of the building.</p> <p>Double Tree by Hilton hotel. Situated on the outskirts of Nottingham, the site sits within a natural wildlife heaven. The brief required 36 new bedrooms and a new multi-purpose hall. Interior and exterior finishes were to match existing construction. Among the parameters to keep in consideration were loss of parking, preserving the natural features of the site and change of ground levels.</p> <p>Collingham Care Home. The brief required 7 new room and additional common areas. A creative courtyard layout has been chosen to give protected and sheltered open areas for the residents. Existing alignments and specific medical and safety requirements for the residents were among the parameters for the design.</p>
MAJOR ROLES & RESPONSIBILITIES	Architect Design the project's layouts; architectural details; construction details. Deliver design packages for all the stages. Dealing with the clients and all the consultants.
RIBA STAGES	1 to 4
COST	Double Tree by Hilton, £2.7m. Collingham care Home, waiting evaluation.
STATUS	Double Tree by Hilton, construction. Collingham care Home, waiting planning response.
LOCATION	Nottingham and nottinghamshire.

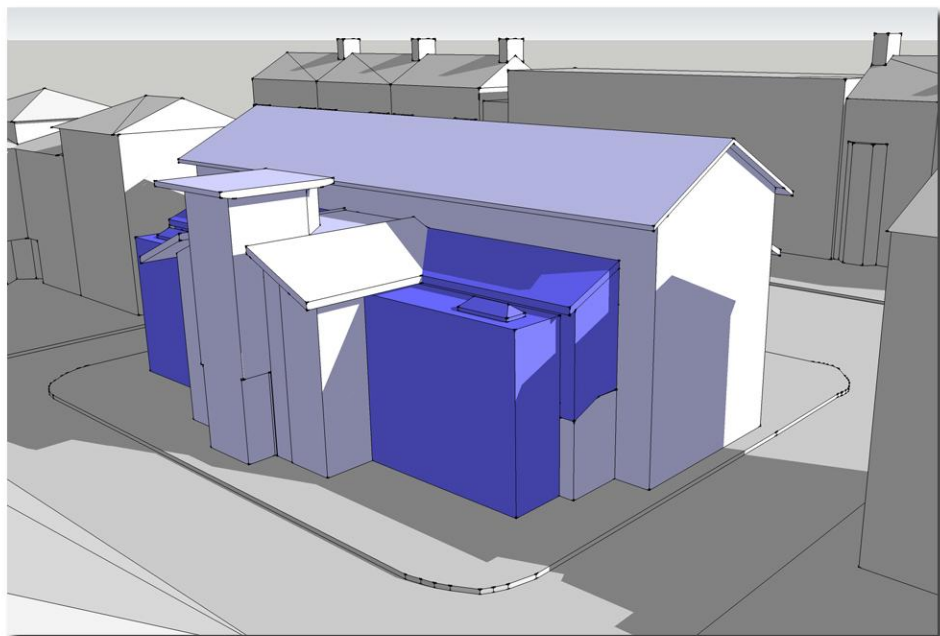
Opposite, clockwise from top: render showing extension to the left and existing building to the right; Proposed Ground Floor Plan for the Gateway Hotel application; Proposed Elevations for the care home application, new build is hatched.



PRESCHOOLS

PROJECT TYPES	Education. Change of use. New construction, extension and refurbishment.
PROJECT	<p>The London Pre School aims to create state-of-the-art preschools which go beyond Ofstead's requirements, aiming to the highest quality possible for both the education offer and the buildings themselves.</p> <p>Each layout takes its own site-specific form, while following functional, safety, efficiency and technical needs. The client's Schedule of Accommodation is the only common denominator to the projects.</p> <p>All the projects are in heavily residential areas and careful and each time multi-topic parameters have been considered, such as noise and traffic impact.</p> <p>The Wandsworth project is located at the ground floor of an existing high-rise. The Finchley project is a new construction which sits in a heavily green site, a conservation area and with considerable ground level changes. The Muswell Hill project refurbishes the whole of a mostly-vacant locally listed building. The Winchmore Hill project is a change of use with a core infill. The Crouch End project is a change-of-use with two-storey extensions.</p>
MAJOR ROLES & RESPONSIBILITIES	Architect I followed the projects from their very inception. I dealt with the clients, the general contractor, and all the consultants. I followed the Planning Applications. I designed and drafted anything from the general layouts to the construction details. I attended progress meetings and site progress meetings.
RIBA STAGES	1 to 7
COST	Various. £ 3,000,000 +
STATUS	Wadsworth, completed. Finchley, in construction. Muswell Hill, in construction. Winchmore Hill, in construction. Crouch End, waiting for planning response.
LOCATION	Various locations in north London.

Opposite, clockwise from top left: Finchley, Proposed Elevation; Wandsworth, one of the studios; Muswell Hill, construction site; Crouch End, massing study of the proposed extensions, included in the Design & Access Statement.



UK RESIDENTIAL PROJECTS

PROJECT TYPES	Residential: private. Refurbishment, conversion and new-build.
PROJECT	<p>I have worked on a various residential projects. Each project presented unique challenges because of location, size, type, and target.</p> <p>The following are notable examples.</p> <p>Queens Chambers.</p> <p>The most iconic building overlooking the main square of Nottingham (Old Market Square), this 1880s Grade II listed building is from Watson Fothergill. Seven multi-bedroom apartments were designed with high-end interiors and the utmost respect for the existing features. The historic fabric received only the necessary touches to guarantee safety and continuity.</p> <p>Adam's Hill.</p> <p>This site is located in a high-end residential area within the Wallaton Park Conservation Area in Nottingham. The clients desired their dream family house and the design created a comfortable and spacious 4-bedroom, three-storey house with plenty of room for guests and elegant interiors while maintaining all the natural features of the property. The design had to deal with TPOs, adjacent properties' alignments, steep ground level changes and other parameters.</p>
MAJOR ROLES & RESPONSIBILITIES	<p>Architect.</p> <p>Design layout options; efficiently meet the clients demands while respecting regulations and codes; coordinate the design team and other consultants; communicate with the clients; building site progress meetings and survey.</p>
RIBA STAGES	1-7
COST	<p>Queens Chambers, £900,000.</p> <p>Adams Hill, £1,000,000.</p>
STATUS	<p>Queens Chambers, completed.</p> <p>Adams Hill, completed.</p>
LOCATION	Nottingham.

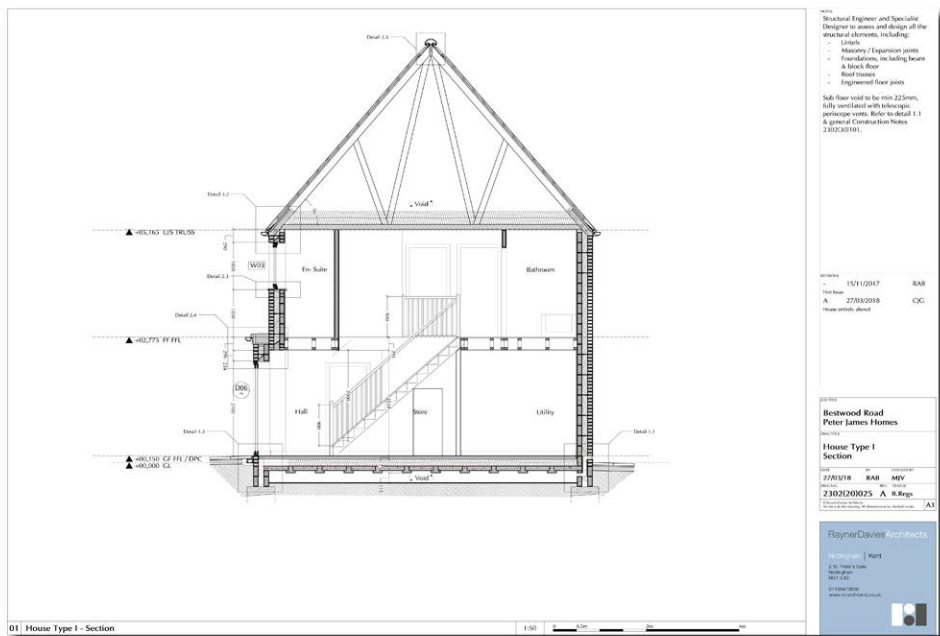
Opposite, clockwise from top-left: Queens Chambers exterior view; Queens Chambers, details; Adams Hill, Proposed Exteriors Plan; Adams Hill, construction site.

[illegible]

UK RESIDENTIAL PROJECTS

PROJECT TYPES	Residential: student housing; real estate development.
PROJECT	<p>I have worked on a various residential projects. Each project presented unique challenges because of location, size, type, and target.</p> <p>The following are notable examples.</p> <p>Norwich Union House.</p> <p>The five-storey, 1960s building is on the south side of Old Market Square in Nottingham, commercial at ground floor but otherwise vacant until this overhaul. The design for student housing seemed ideal given the current market and city transformation. The building has seen an 88-bed development taking place in the four upper floors.</p> <p>Bestwood Road.</p> <p>This project aimed for a balance between density and quality. A masterplan with 48 units was designed offering a combination of detached and semi-detached houses with seven total house-types. For each, the location and interaction with the overall settlement have been chosen depending on site-specific needs such as land configuration, views to nearby natural features, and circulation.</p>
MAJOR ROLES & RESPONSIBILITIES	<p>Architect.</p> <p>Develop layout options; draft and design construction drawings; efficiently meet the clients demands while respecting regulations and codes; coordinate the design team and other consultants; communicate with the clients; building site progress meetings and survey.</p>
RIBA STAGES	1-7
COST	Undisclosed.
STATUS	Norwich Union House, completed. Bestwood Road, planning.
LOCATION	Nottingham and Nottinghamshire.

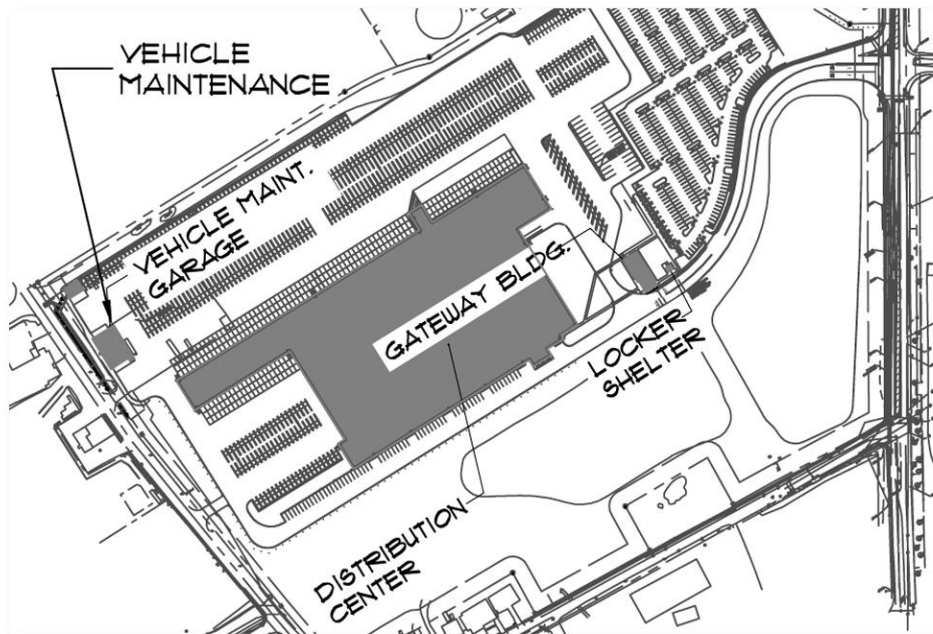
Opposite, clockwise from top-left: Norwich Union House, bedroom view; Norwich Union House, Proposed Third Floor Fire Strategy Plan; Bestwood, Proposed Materplan Layout; Bestwood, House Type I, Proposed Section drawing.



USA COMMERCIAL PROJECTS

PROJECT TYPES	Retail. Offices. Leisure/health centers. New construction and refurbishment.
PROJECT	<p>I worked or brought to completion several commercial projects of different size and nature. They consisted in offices, retail, or health clubs projects. Below are few examples.</p> <p>CenterCal Properties (CCP). Mostly retail projects, these are refurbishment or new construction (stand-alone) projects throughout the United States.</p> <p>The Gables's West Ave urban development in Dallas, Texas needed a wide range of tenant improvements projects, satisfying varying tenants' needs such as for layout, distribution and finishes.</p> <p>C2K's LA Fitness projects consist mostly of stand-alone structures from 4,000sqm to 5,000sqm. All aimed to create the open, modern spaces that define the LA Fitness experience. The spaces harmoniously blend with the structure, highlight signature corporate elements, and create an optimal space for the various LA Fitness amenities.</p> <p>FedEx projects consisted in developing the company's 27,870sqm signature distribution centres, with the annexed buildings. The projects consisted in administering the layouts; finding and optimizing building types; and solving site specific issues.</p>
MAJOR ROLES & RESPONSIBILITIES	Designer Design the project's layouts; architectural details; construction details. Deliver design packages for all the stages. Deal with the clients, the general contractor; and all the consultants.
RIBA STAGES	1 to 7 (USA counterpart)
COST	Unknown. Only disclosed to principals. LA Fitness projects. Various. Estimated from \$ 3,000,000 to \$ 6,000,000.
STATUS	Completed.
LOCATION	Various locations throughout the USA.

Opposite, clockwise from top-left: CCP, retail development; West Ave, mixed-use development. retail and offices at ground and first floors; LA Fitness entry hall; FedEx, Proposed Schematic Site Plan.



ART

I am strongly attracted by the Romantic philosophy expressed by the slogan "Art for Art's Sake": Art is separated by any didactic or utilitarian function.

I think the masterpieces representing the highest expression of Art through the centuries are complete within themselves.

I do believe, though, that the artist could choose to infuse its artwork with a moral purpose, but only if it would be in and not apart from itself.

Two of my hobbies are photography and hand-drawing. I try to capture the images I have in mind, or those that are in front of me offered by the outside world.

If my artistic expressions have a further message I think they can reach even higher standards, but I am still always drawn to the emotional, unbonded reaction that art can spur in a person.

